

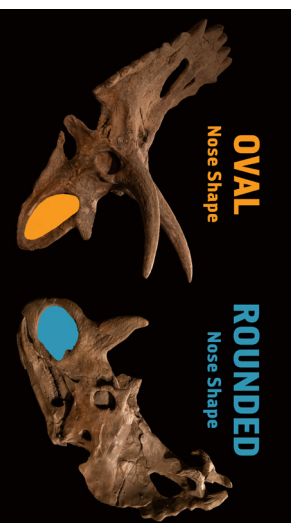
## Traits Observation Data



Trait #1 Nose Hole	1-O	1-R	1-R	1-O	1-R	1-O	1-R	1-O	1-O	1-R	1-R	1-O	1-R	1-O	1-O
Trait #2 Nose Horn	2-S	2-S	2-L	2-S	2-L	2-S	2-S	2-S	2-S	2-S	2-L	2-S	2-S	2-S	2-S
Trait #3 Eye Horn	3-L	3-L	3-S	3-S	3-S	3-L	3-L	3-L	3-S	3-S	3-S	3-L	3-S	3-L	3-L
Trait #4 Frill Size	4-S	4-S	4-S	4-L	4-S	4-L	4-S	4-L	4-L	4-L	4-S	4-L	4-S	4-L	4-S
Trait #5 Frill Style	5-L	5-M	5-M	5-L	5-M	5-L	5-L	5-M	5-L	5-M	5-M	5-L	5-M	5-L	5-L

# Traits Observation

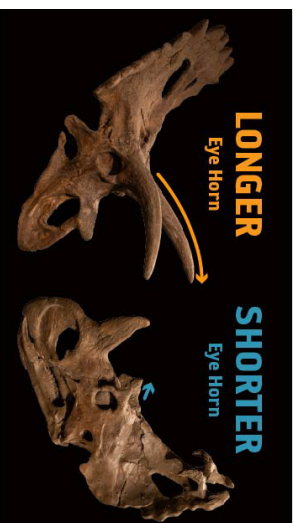
1-O	1-R	1-R	1-O	1-R
1-O	1-R	1-O	1-O	1-R
1-R	1-O	1-R	1-O	1-O



## Trait #1: Nose Hole

Make detailed observations of each dinosaur fossil to determine if its nose is more elongated like an **oval** or more **rounded**.

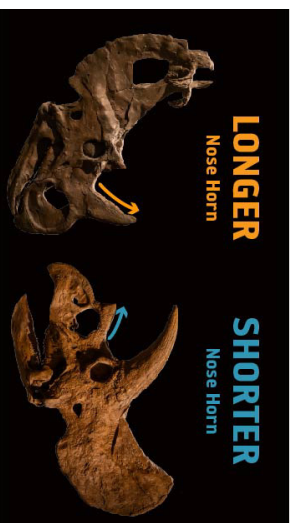
2-S	2-S	2-L	2-S	2-L
2-S	2-S	2-S	2-S	2-S
2-L	2-S	2-S	2-S	2-S



## Trait #2: Nose Horn

Make detailed observations of each dinosaur fossil to determine if its nose horn is generally **longer** or **shorter**.

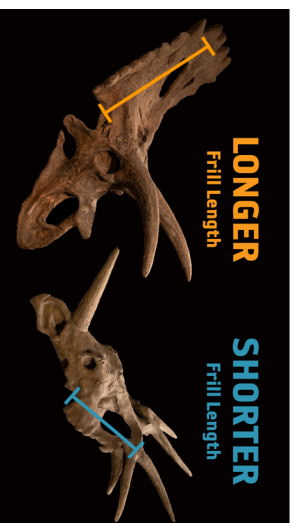
3-L	3-L	3-S	3-S	3-S
3-L	3-L	3-L	3-S	3-S
3-S	3-L	3-S	3-L	3-L



## Trait #3: Eye Horn

Make detailed observations of each dinosaur fossil to determine if its eye horn is generally **longer** or **shorter**.

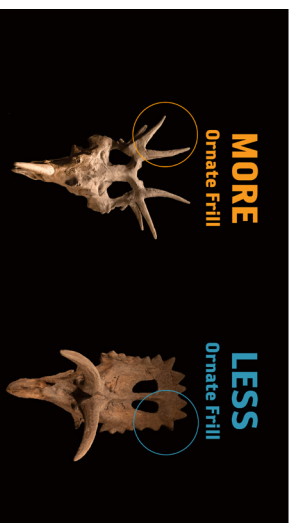
4-S	4-S	4-S	4-L	4-S
4-L	4-S	4-L	4-L	4-L
4-S	4-L	4-S	4-L	4-S



## Trait #4: Frill Length

Make detailed observations of each dinosaur fossil to determine if its frill length is generally **longer** or **shorter**.

5-L	5-M	5-M	5-L	5-M
5-L	5-L	5-M	5-L	5-M
5-M	5-L	5-M	5-L	5-L



## Trait #5: Frill Style

Make detailed observations of each dinosaur fossil to determine if its frill is **more** ornate or **less** ornate.